

The goal of Master Planning is to develop comprehensive, equitable, integrated and visionary high school campus master plans with authentic school community engagement.



## MADISON HIGH SCHOOL MASTER PLAN

Portland Public Schools | Opsi Architecture + Dao

# MASTER PLAN COMMITTEE 04

# AGENDA

## Review Previous Workshops

Review Outcomes of MPC 03, Educators 02  
Outreach Workshop and Open House  
Roosevelt Tour

## Site and Landscape

Review site diagram, key elements  
Image Boards - Voting

## Interactive Vision Work Session

Review 3 options  
Discuss at each table  
Comment and select preferred  
Report Back

## Public Comment

## Next Steps

Tours  
Public Outreach and Open House  
MPC 05



*“Select preferred option”*

*“Comment on presented plans”*

# OUTREACH



# OUTREACH



# MASTER PLAN COMMITTEE 03

Table 1

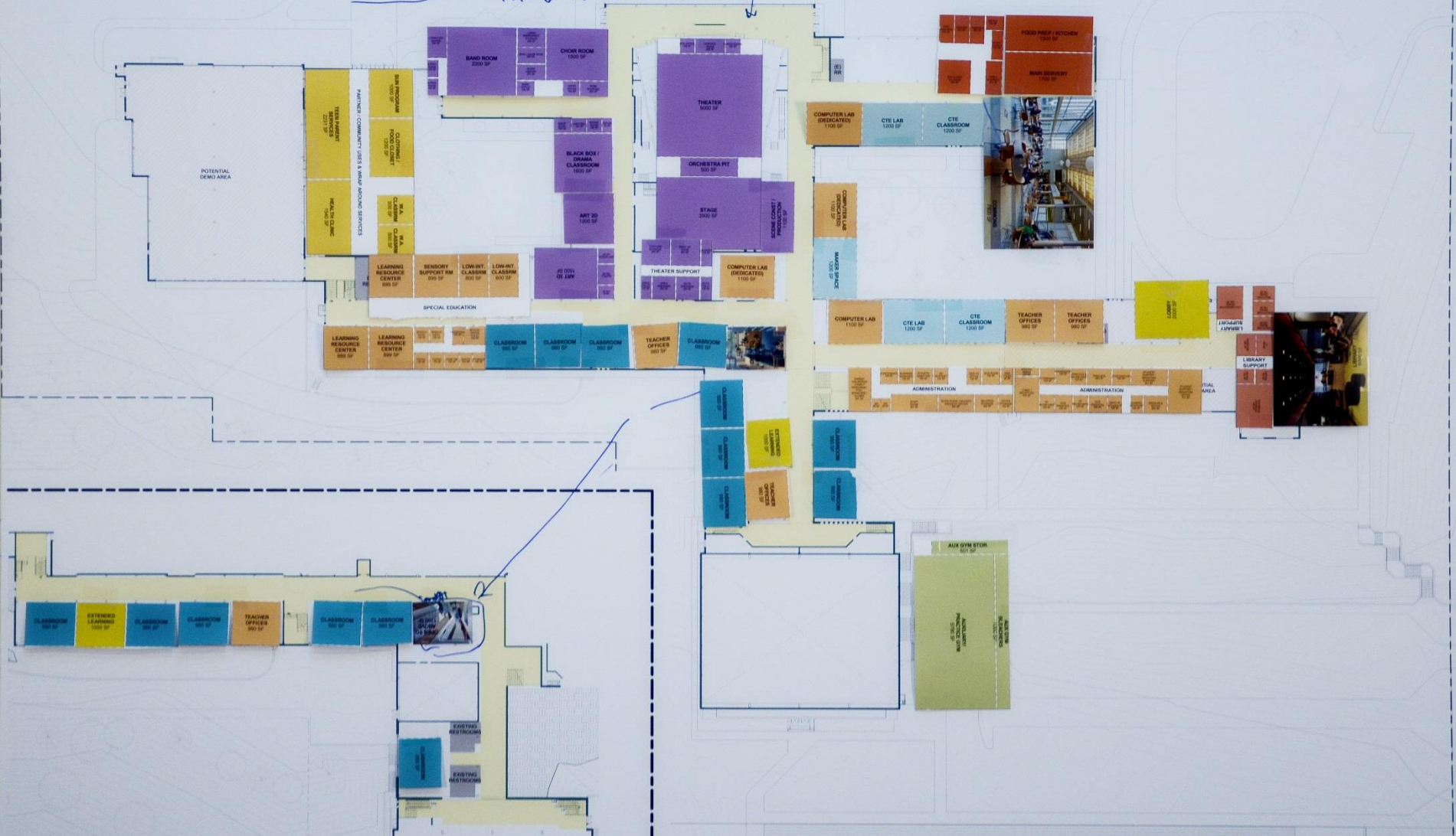
- Maker Space near entry – ‘on display’
- Group SPED on west side - privacy, access to courtyard, separate entry
- Group Comm / Wrap-Around - west side for after-hours access
- Science lab grouped upstairs
- Atrium at core
- Group Art near theater functions
- Move main stairs into more visible & prominent location
- Bridge on second floor to create circulation loop between wings
- Connect roadway and add parking

# MASTER PLAN COMMITTEE 03

7.7.17

CONTRACT ROAD WAY AND PARKING

MORE MOVS ACCESSIBLE TO PUBLIC!



LOWER FLOOR PLAN

1" = 20'

MAIN FLOOR PLAN

1" = 20'

# MASTER PLAN COMMITTEE 03



UPPER FLOOR PLAN

1" = 20'

# MASTER PLAN COMMITTEE 03

## Table 2

- Common areas in front
- Admin areas exposed to public view
- Exterior access for health clinic
- CTE group in current cafeteria location
- Disperse Teacher collaboration throughout school
- Convert Theater balcony to small instructional spaces
- Keep SPED near school core



# MASTER PLAN COMMITTEE 03



LOWER FLOOR PLAN

MAIN FLOOR PLAN

# MASTER PLAN COMMITTEE 03



UPPER FLOOR PLAN

1" = 20'

# MASTER PLAN COMMITTEE 03

## Table 3

- Commons: view to park & beacon from 82nd
- Second entrance to access to health clinic and teen parent program
- Health clinic, teen parent services, and SUN near entrance
- Keep Theater as is, recess orchestra pit
- Outdoor spaces for Teen parent away from 82nd
- Student Art gallery near commons
- Art classrooms on main floor, graphic design above connected by atrium
- Group Science - access to courtyard
- SPED on main floor with separate entry near drop-off
- SPED currently runs coffee shop out of one of their classrooms - centrally located
- Student Government near Admin – they work together
- Student leadership needs large layout area for posters
- Shared lobby new/old gym - keep garden

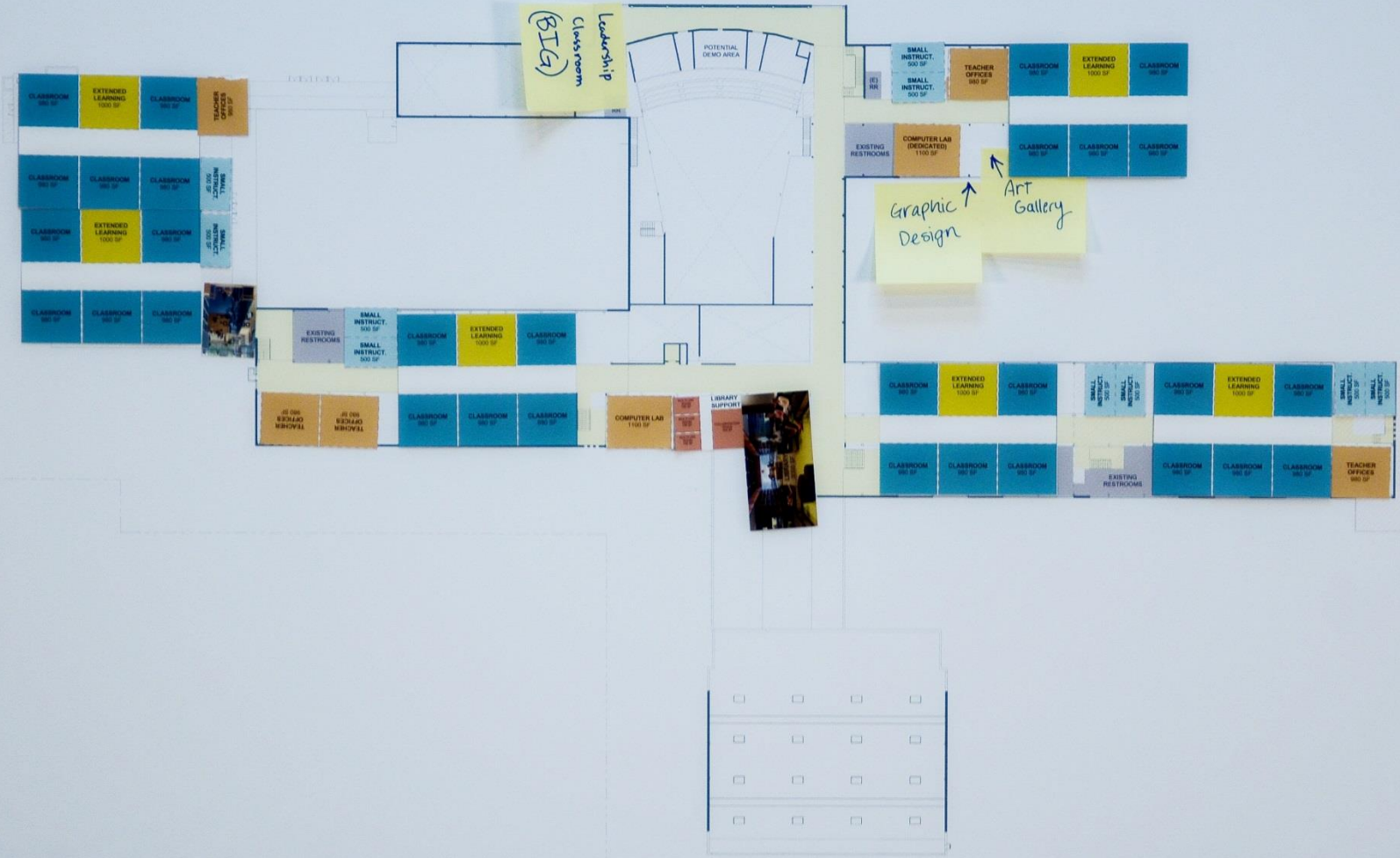
# MASTER PLAN COMMITTEE 03



**LOWER FLOOR PLAN**  
1" = 20'

**MAIN FLOOR PLAN**  
1" = 20'

# MASTER PLAN COMMITTEE 03



UPPER FLOOR PLAN

1" = 20'



# MASTER PLAN COMMITTEE 03

## Table 4

- Teen parent service needs outdoor playground area for children
- Intermix departments
- Open space / atrium in core
- Activate Core with Coffee stand and Art / CTE gallery
- Connect commons to auditorium
- Commons with view of park
- 'Kitchen-table' commons
- Lobby connected to library and commons
- Library as lantern/beacon
- Student government at crossroads
- Science on multiple floors
- ESL included in learning suites



# MASTER PLAN COMMITTEE 03



UPPER FLOOR PLAN  
1" = 20'

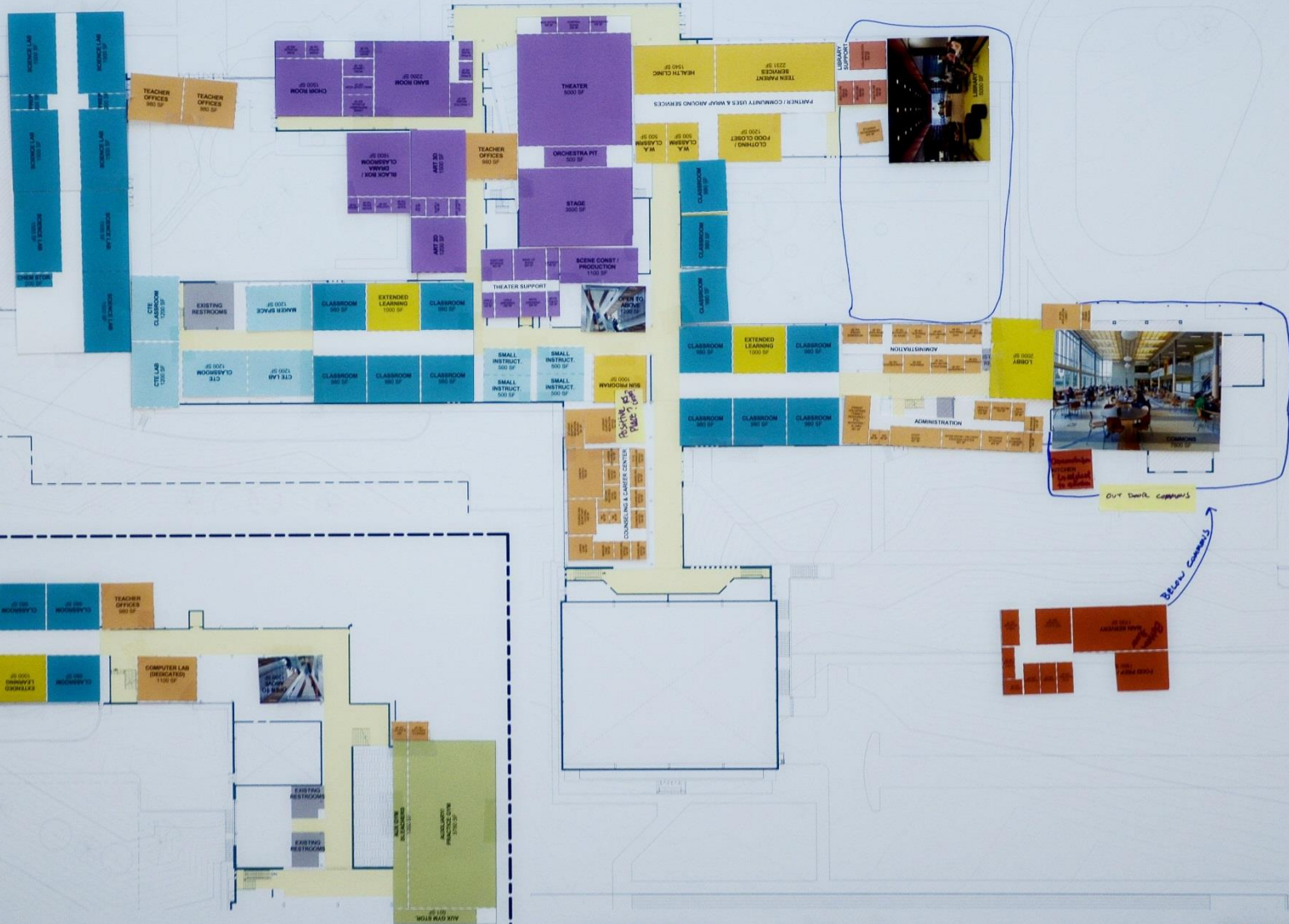


# MASTER PLAN COMMITTEE 03

## Table 6

- Rebuild science wing in old cafeteria location
- Demonstration Kitchen, adjacent to garden
- Outdoor eating for commons
- Servery and Kitchen below commons

# MASTER PLAN COMMITTEE 03



LOWER FLOOR PLAN  
1" = 20'

MAIN FLOOR PLAN  
1" = 20'

# MASTER PLAN COMMITTEE 03



UPPER FLOOR PLAN

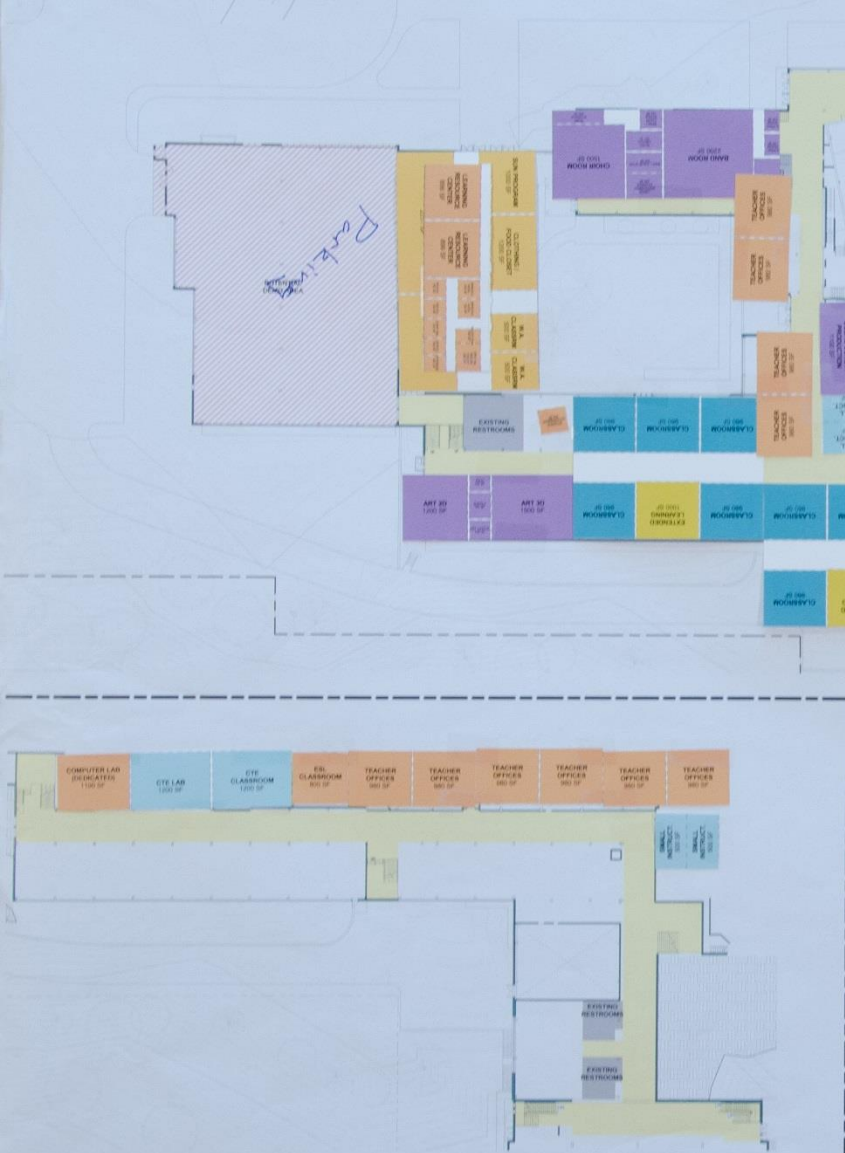
1" = 20'



# EDUCATOR WORKSHOP 02



# EDUCATOR WORKSHOP 02



LOWER FLOOR PLAN

1" = 20'



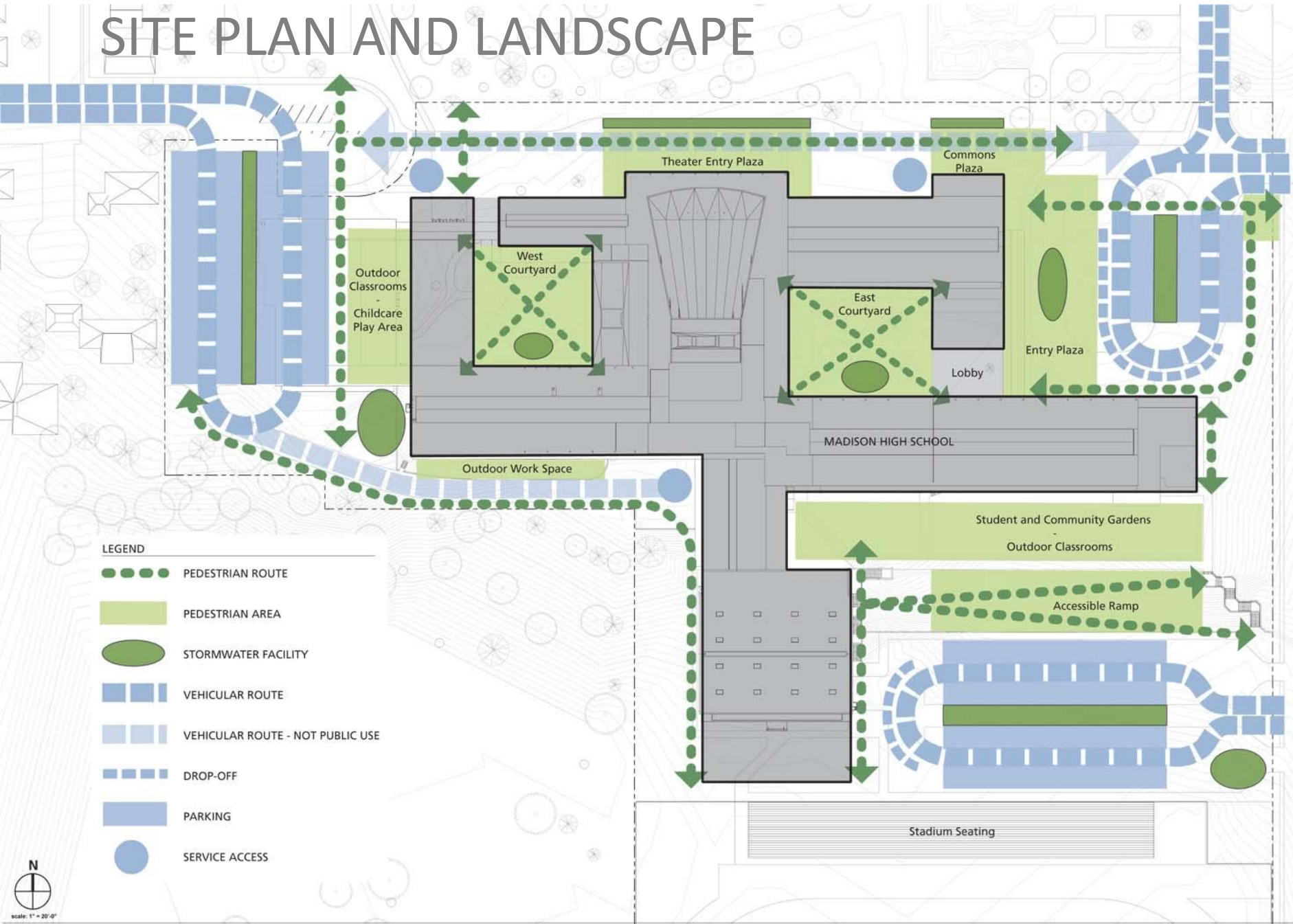
MAIN FLOOR PLAN

1" = 20'









# EXISTING SITE



# SITE PLAN AND LANDSCAPE



## LEGEND

-  PEDESTRIAN ROUTE
-  PEDESTRIAN AREA
-  STORMWATER FACILITY
-  VEHICULAR ROUTE
-  VEHICULAR ROUTE - NOT PUBLIC USE
-  DROP-OFF
-  PARKING
-  SERVICE ACCESS





PLAZAS AND COURTYARDS







GARDENS AND OUTDOOR LEARNING

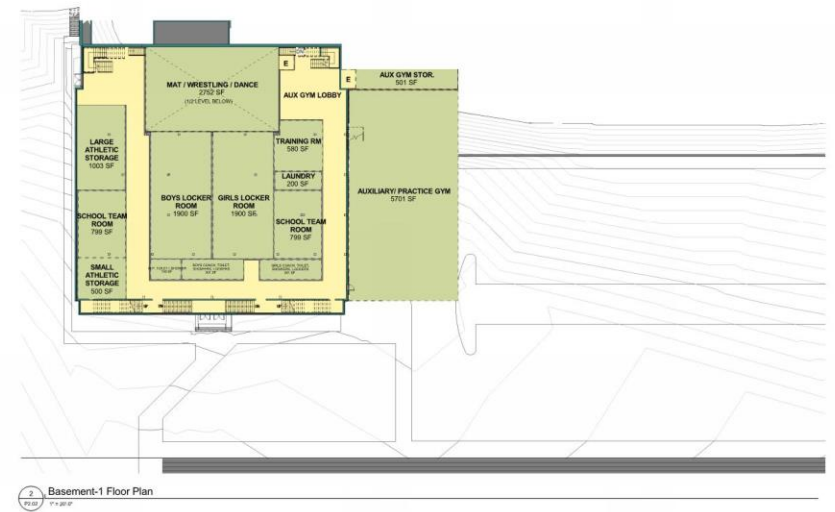
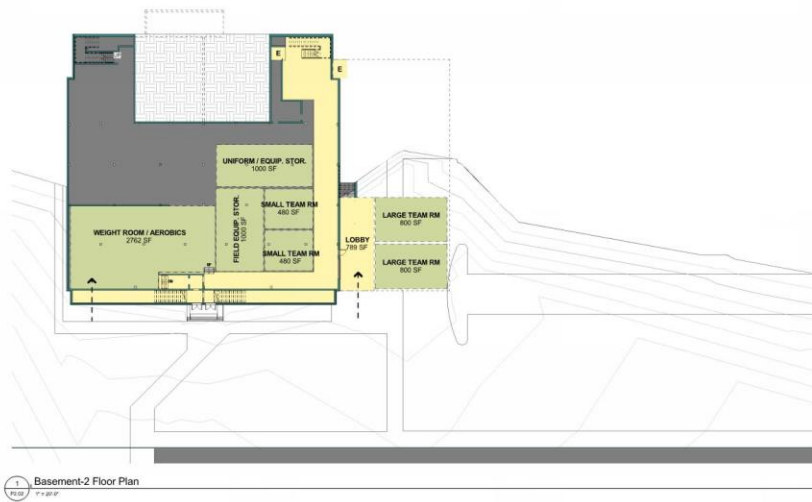




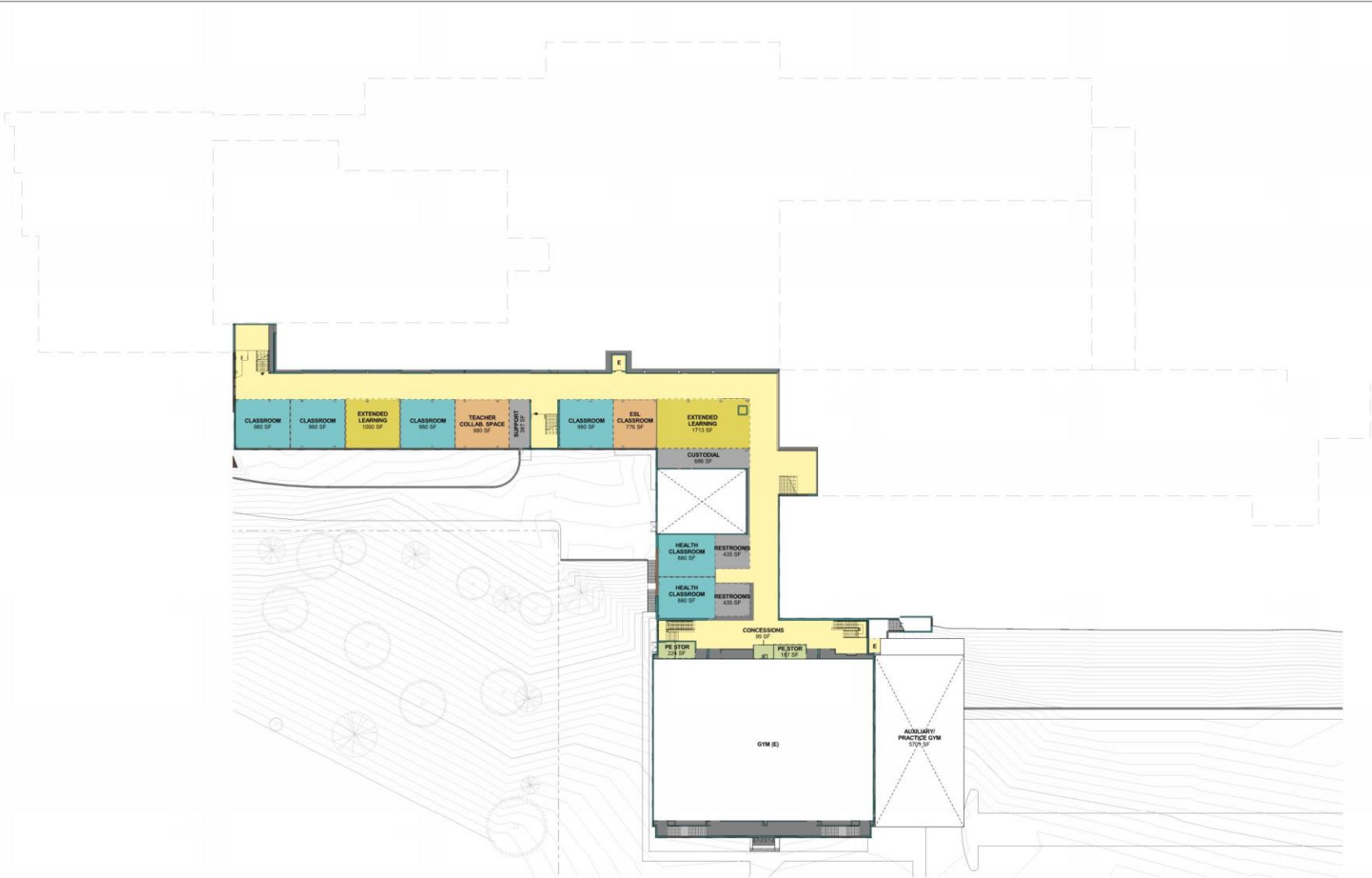
STORMWATER AND ECO-ROOFS



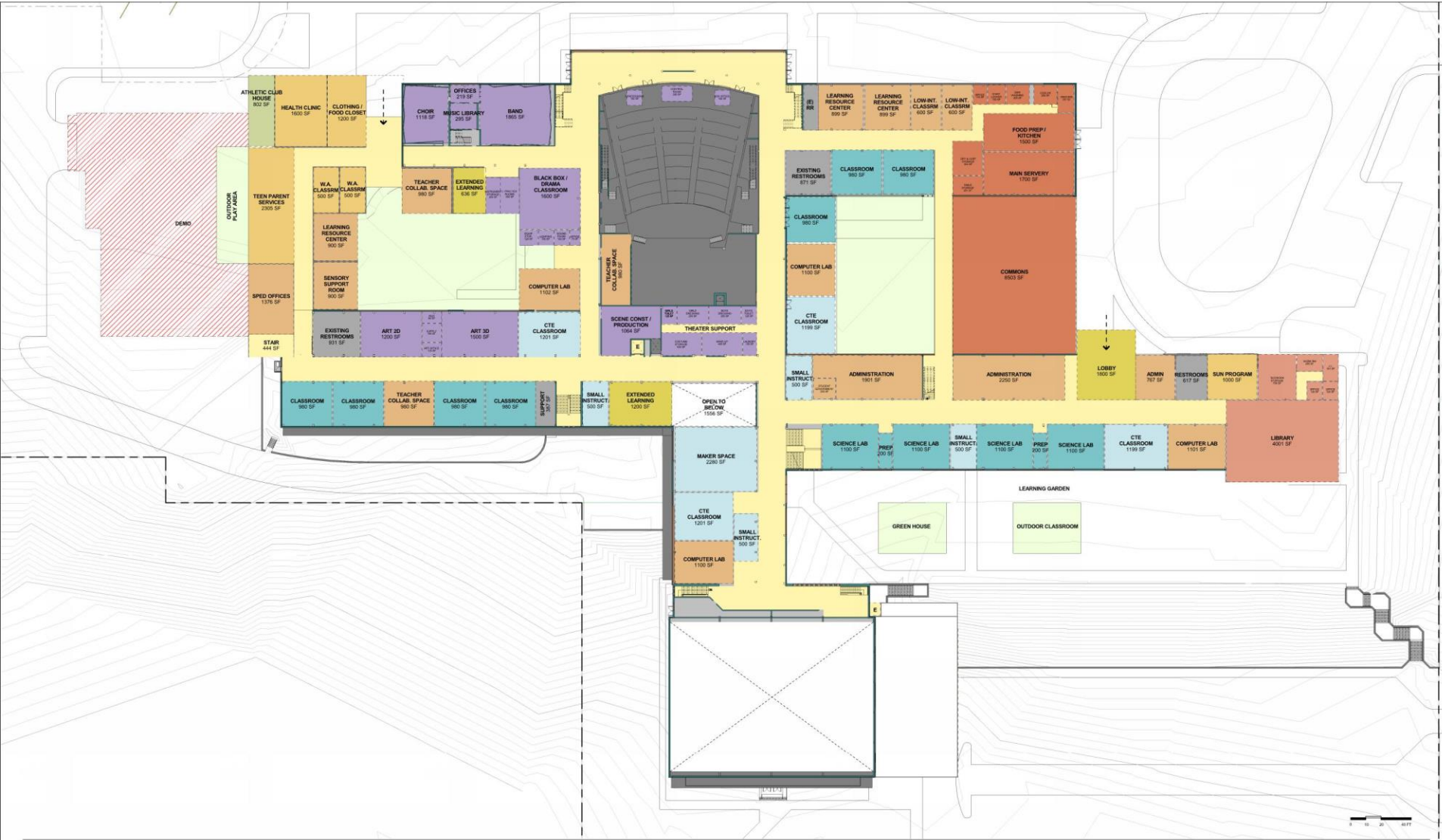
# WORKSHOP OPTION 1



# WORKSHOP OPTION 1



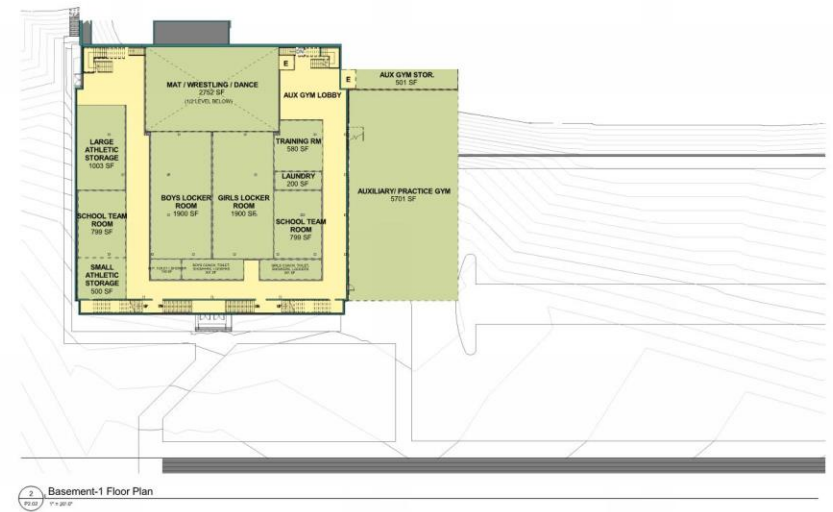
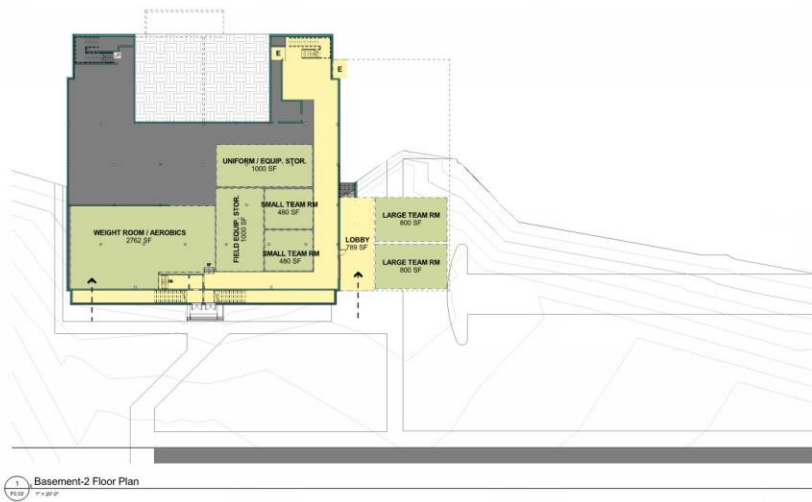
# WORKSHOP OPTION 1



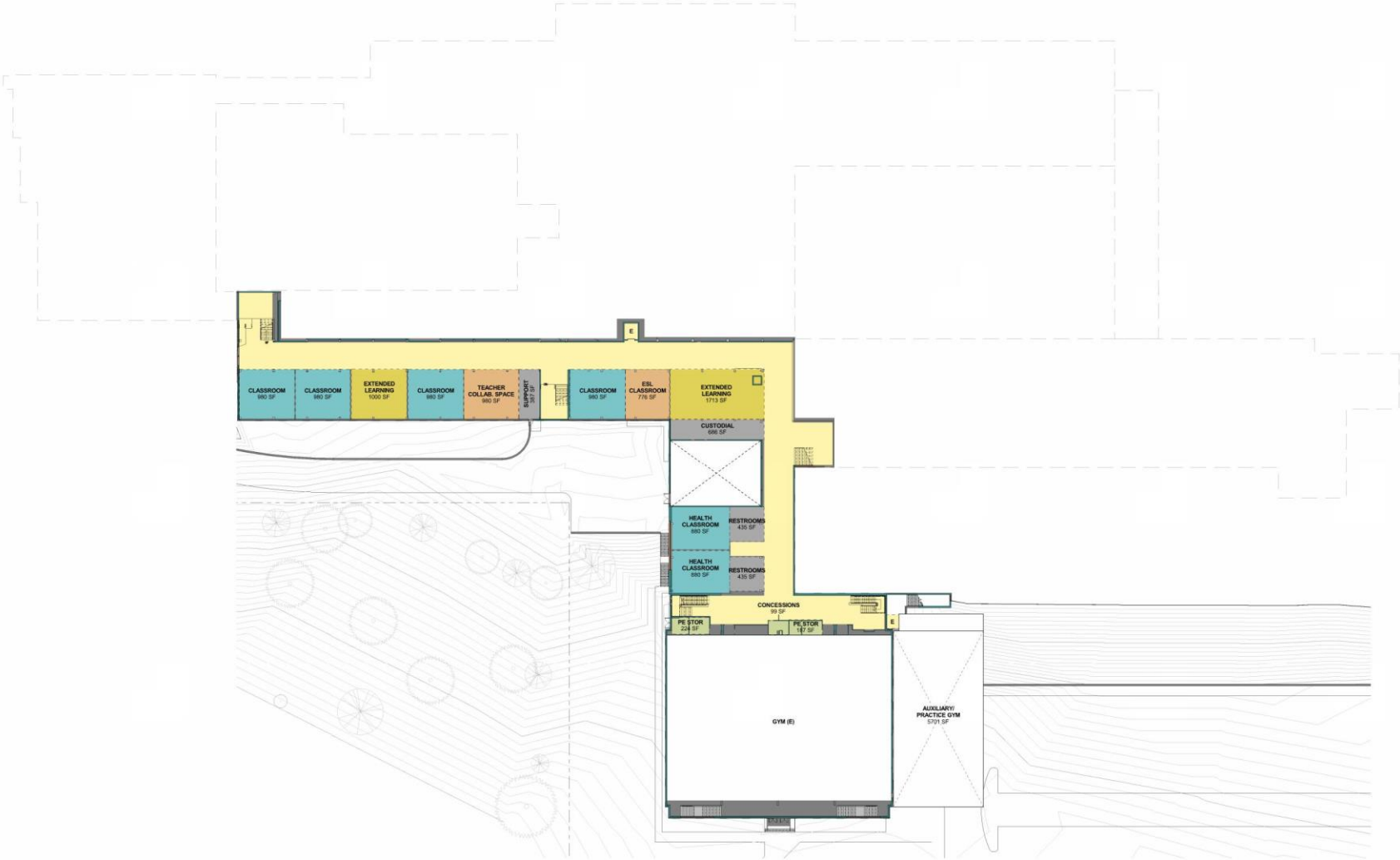
# WORKSHOP OPTION 1



# WORKSHOP OPTION 2A



# WORKSHOP OPTION 2A





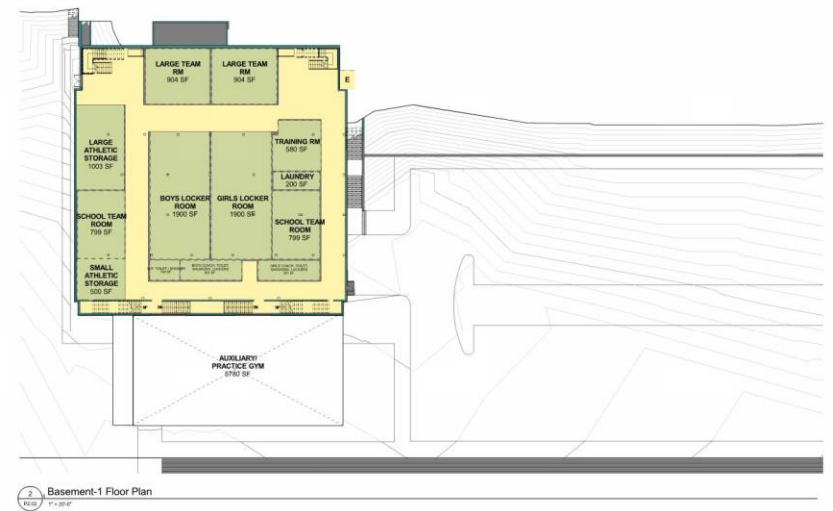
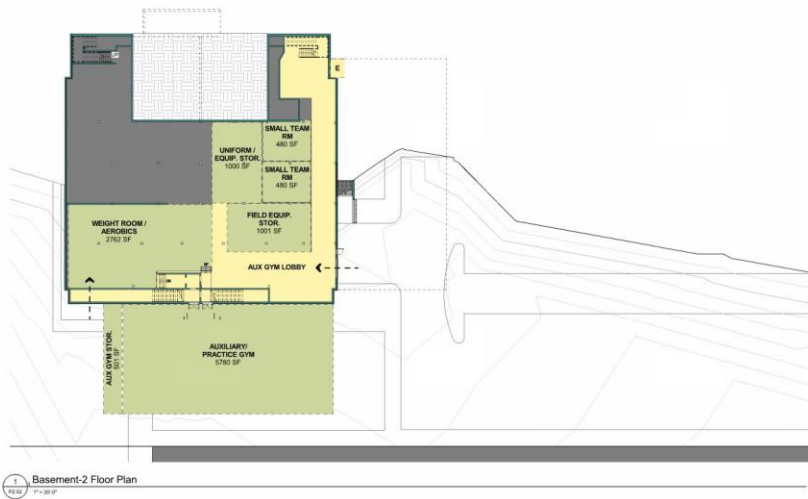
# WORKSHOP OPTION 2A



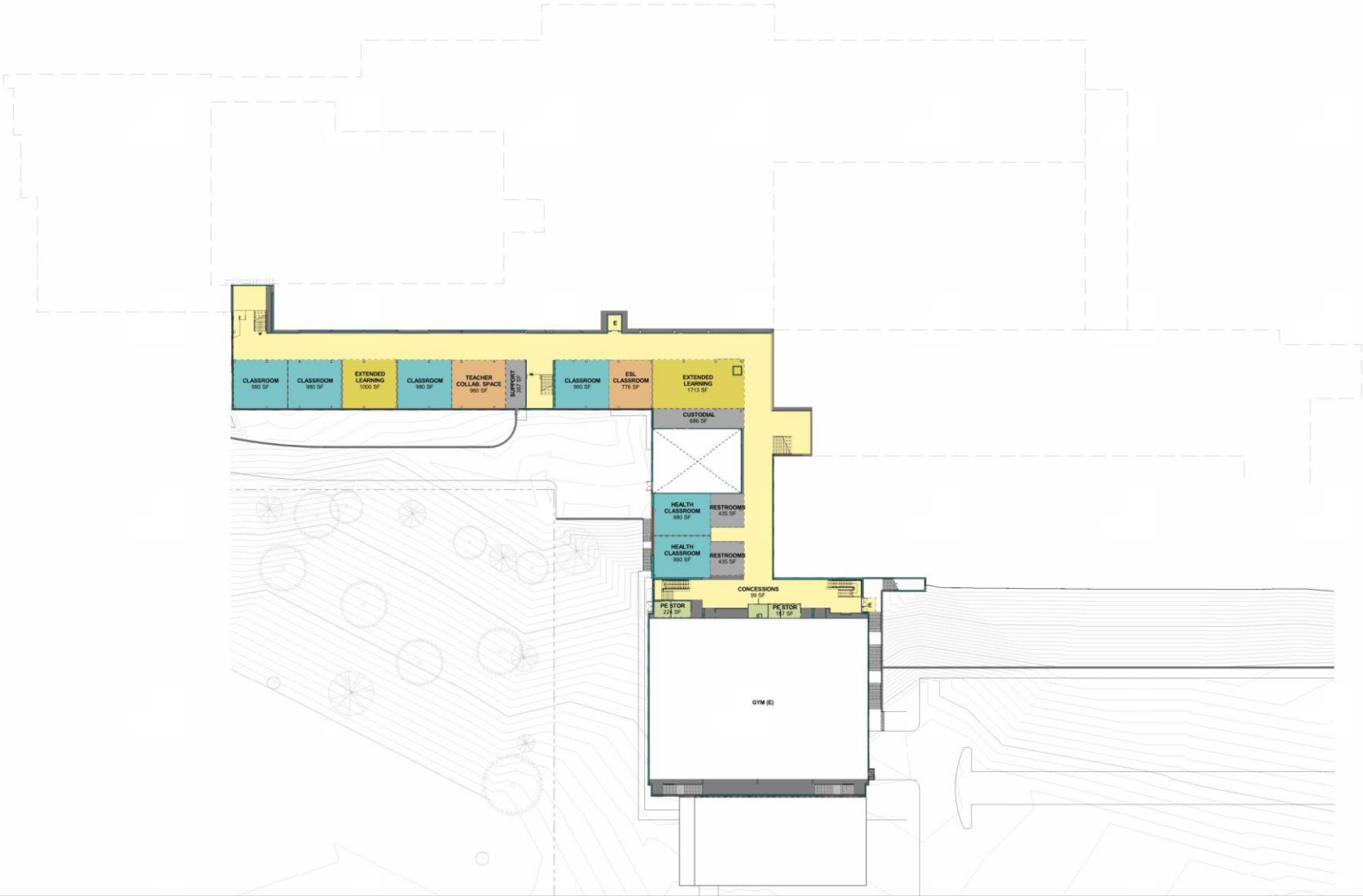
# WORKSHOP OPTION 2A



# WORKSHOP OPTION 2B



# WORKSHOP OPTION 2B



# WORKSHOP OPTION 2B



0 10 20 40 FT

# WORKSHOP OPTION 2B



# MPC NEXT STEPS

## Next Steps

Outreach – Latino Network

Apr 20

Tour of Franklin HS

Apr 22

Outreach – African American

May 03

Open House

May 21/23

MPC 05

May 09



# MADISON HIGH SCHOOL

